

SNAPSHOT OF HIV & AIDS IN MALAYSIA 2016

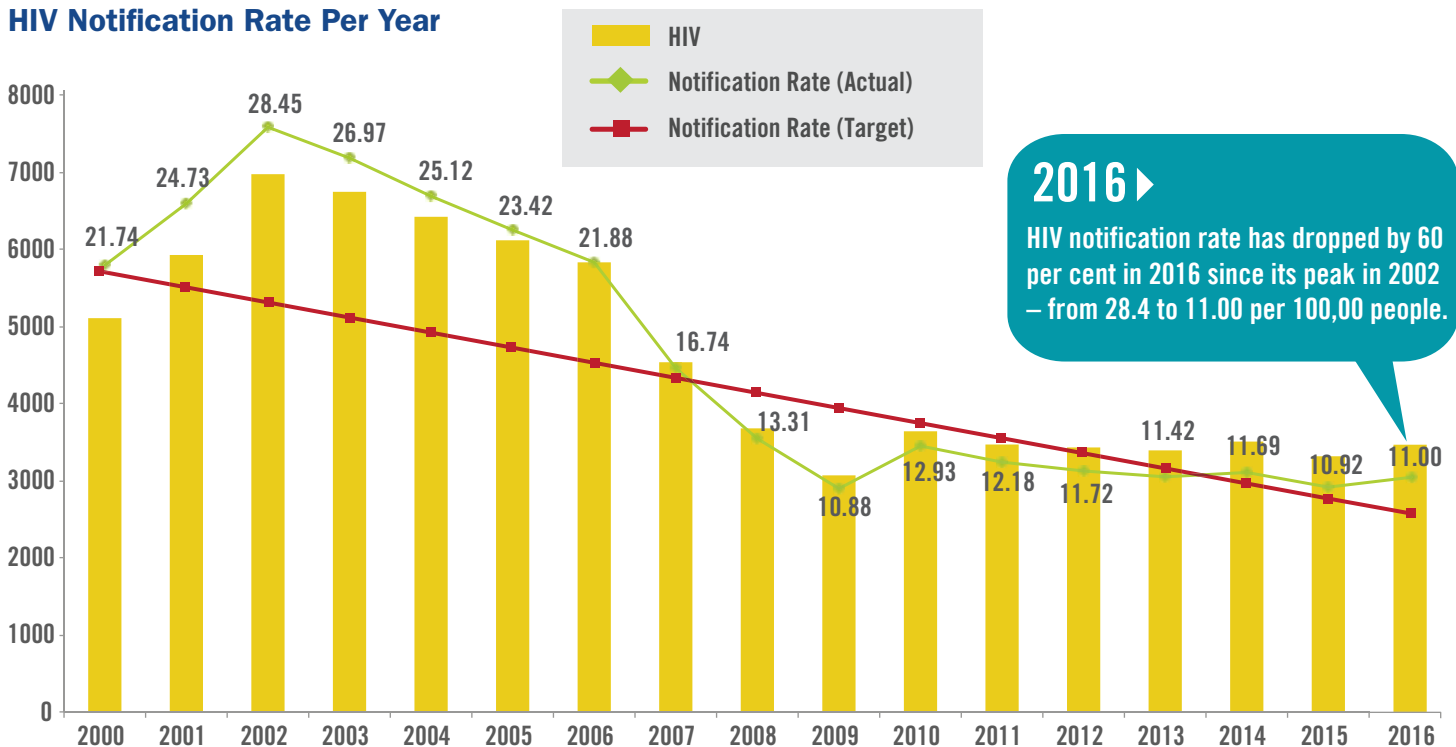
Published by
Malaysian AIDS Council
Malaysian AIDS Foundation



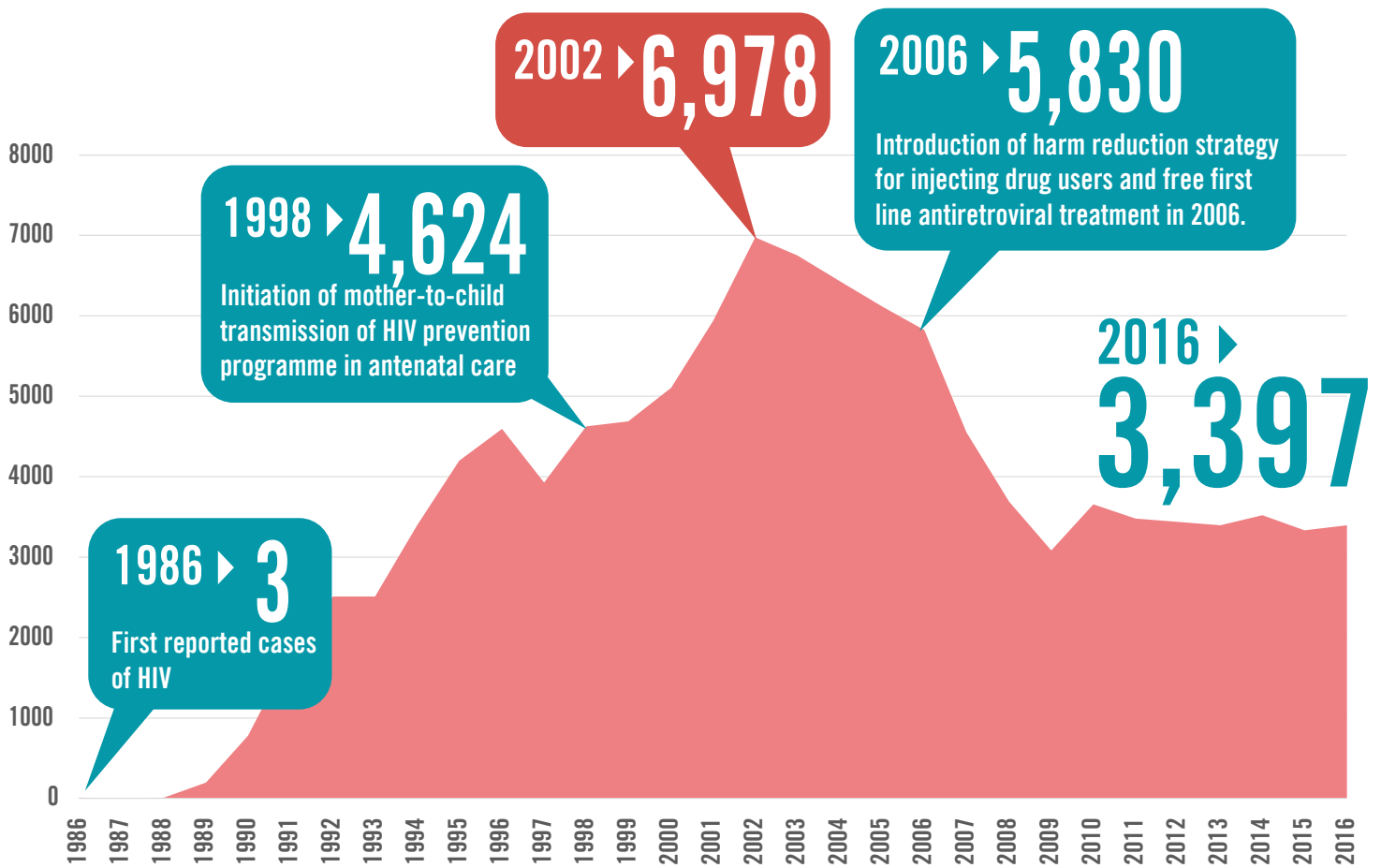
Overview of the HIV & AIDS Epidemic in Malaysia

3,397 New HIV infections in 2016	2,984 New HIV infections in the male population in 2016	413 New HIV infections in women & girls in 2016	93,089 Total people living with HIV (1986 – 2016)	99,338 [89%] Total reported HIV in the male population (1986 – 2016)
12,578 [11%] Total reported HIV in women & girls (1986 – 2016)	111,916 Total reported HIV (1986 – 2016)	911 AIDS-related deaths in 2016	18,827 Total reported AIDS-related deaths (1986 – 2016)	68,392 Total reported HIV in people who inject drugs (1986 – 2016)
33,206 Total reported cases of sexually transmitted HIV (1986 – 2016)	15 New HIV infections in children (<13 years) in 2016	1,146 Total reported HIV in children (<13 years) (1986 – 2016)		

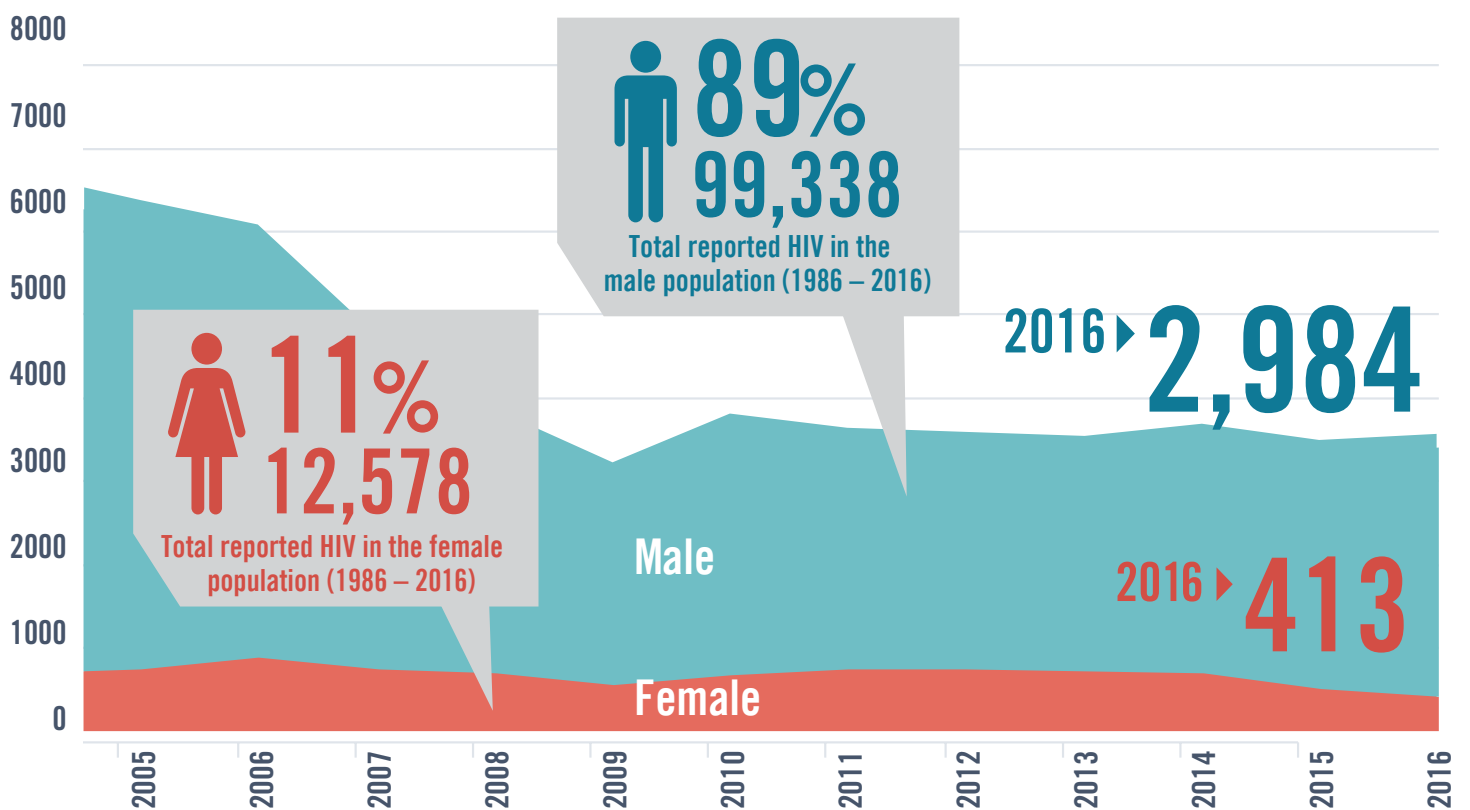
HIV Notification Rate Per Year



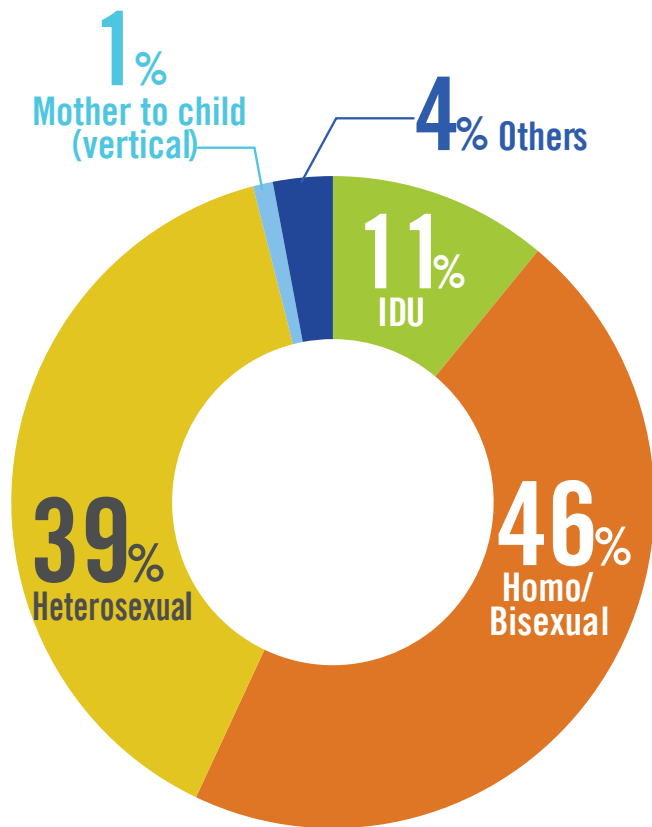
New HIV Cases (1986-2016)



HIV Transmission by Sex (2005 – 2016)

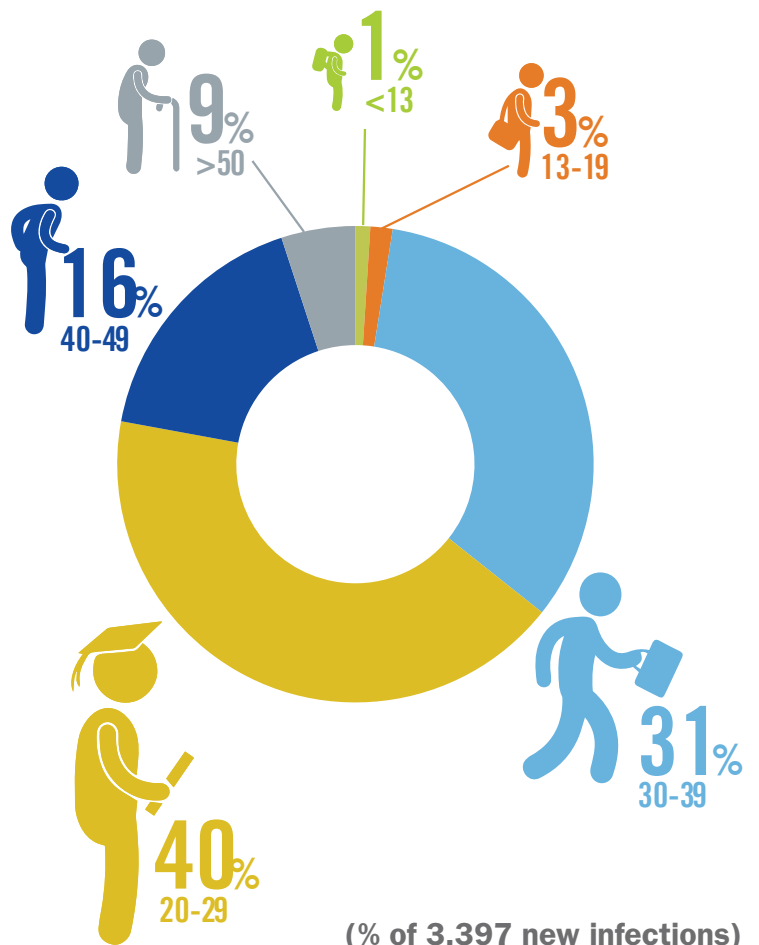


HIV Transmission by Risk Factor in 2016



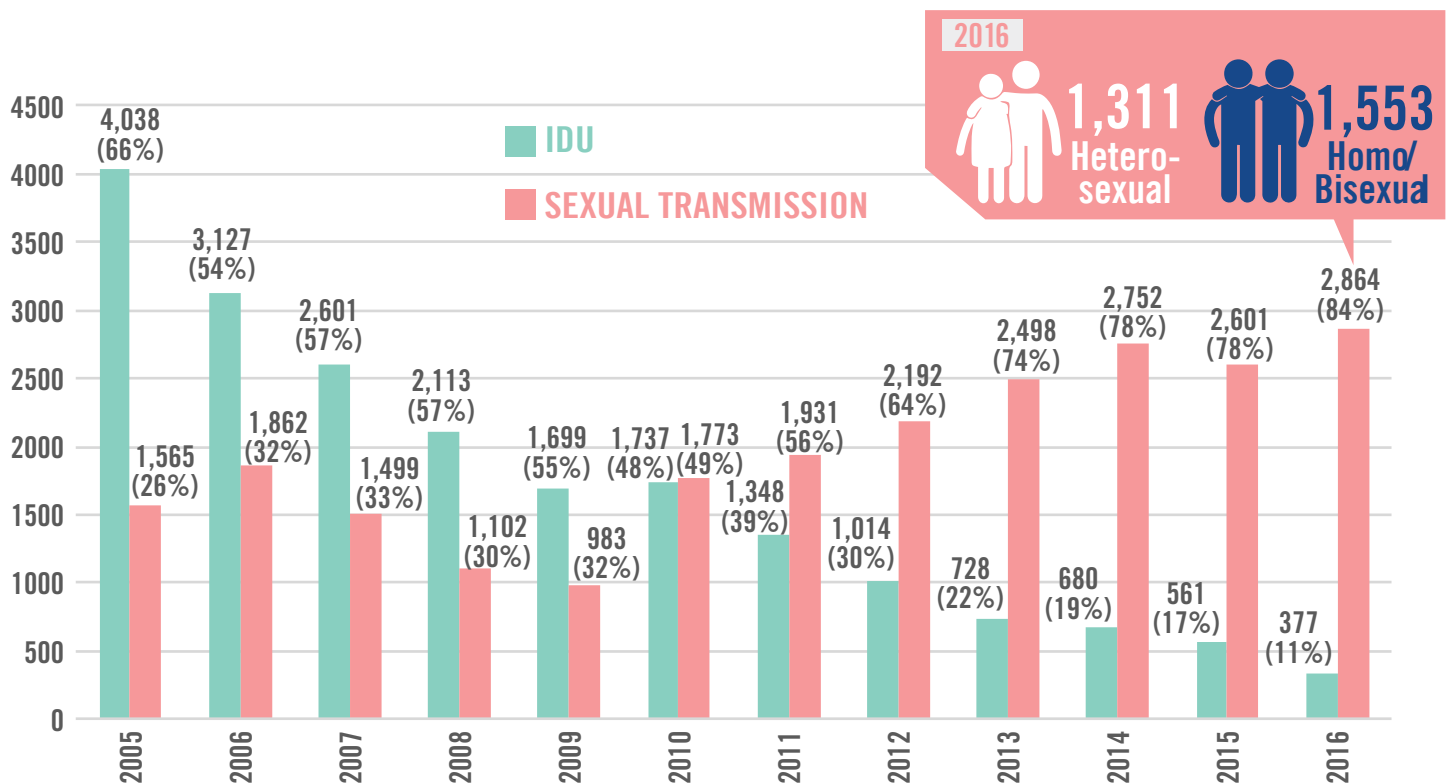
(% of 3,397 new infections)

HIV Transmission by Age Group in 2016



(% of 3,397 new infections)

Comparison of New HIV Infections between Injecting Drug Use and Sexual Transmission (2005 – 2016)



Reported New HIV Infections in Malaysia 1986-2016 (National AIDS Surveillance System)

Indicator	1986	1987	1988	1989	1990	1991	1992	1993	1994	1995	1996	1997	1998	1999	2000	2001	2002	2003	2004	2005	2006	2007	2008	2009	2010	2011	2012	2013	2014	2015	2016	JUMLAH	
	Male	3	2	7	197	769	1741	2443	2441	3289	4037	4406	3727	4327	4312	4626	5472	6349	6083	5731	5383	4955	3804	2988	2527	2984	2744	2704	2665	2820	2818	2984	99338
Female	0	0	2	3	9	53	69	66	104	161	191	197	297	380	481	466	629	673	696	737	875	745	704	553	668	735	734	728	697	512	413	12578	
Total	3	2	9	200	778	1794	2512	2507	3393	4198	4597	3924	4624	4692	5107	5938	6978	6756	6427	6120	5830	4549	3692	3080	3652	3479	3438	3393	3517	3330	3397	111916	
Malay	2	0	6	169	583	1307	1783	1812	2549	3151	3287	2789	3389	3354	3554	4361	5125	4847	4740	4494	3938	3029	2510	2176	2282	2135	1976	1799	1840	1838	1953	76778	
Chinese	1	1	3	11	99	217	339	349	448	574	740	688	718	789	924	852	1005	988	786	763	921	670	438	363	596	575	596	713	683	676	713	17239	
Indian	0	1	0	9	53	214	308	220	320	354	419	324	351	362	453	483	507	508	468	416	423	339	217	180	261	247	239	257	248	261	233	8675	
Foreigner	0	0	0	6	39	51	73	107	59	93	105	88	118	112	107	171	213	286	284	269	233	308	187	166	298	297	373	299	330	204	61	4937	
Others	0	0	0	5	4	5	9	19	17	26	46	35	48	75	69	71	128	127	149	178	315	203	340	195	215	225	254	325	416	351	437	4287	
Total	3	2	9	200	778	1794	2512	2507	3393	4198	4597	3924	4624	4692	5107	5938	6978	6756	6427	6120	5830	4549	3692	3080	3652	3479	3438	3393	3517	3330	3397	111916	
<13	0	0	0	0	3	5	7	4	14	10	20	20	39	61	86	63	71	61	79	76	87	58	48	58	39	65	52	50	38	17	15	1146	
13-19	0	0	2	13	8	49	44	47	66	91	67	43	63	140	65	65	61	78	55	64	59	60	75	37	43	55	77	75	79	86	103	1770	
20-29	1	0	4	107	371	806	1119	1146	1421	1702	1668	1423	1678	1620	1639	1958	2440	2192	2055	1820	1587	1198	919	712	857	860	1002	1066	1116	1232	1356	37075	
30-39	0	2	3	65	292	777	1080	1068	1510	1789	2100	1744	1904	1993	2209	2590	2846	2819	2745	2660	2566	2006	1559	1382	1595	1428	1406	1206	1234	1075	1060	46713	
40-49	2	0	0	5	48	113	191	183	309	414	580	556	730	676	901	1069	1258	1246	1169	1135	1120	875	722	604	792	766	731	701	706	643	555	18800	
50+	0	0	0	5	3	6	15	29	39	73	95	102	146	132	172	173	302	304	290	327	361	321	275	243	326	305	167	295	344	277	308	5435	
Unknown	0	0	0	5	53	38	56	30	34	119	67	36	64	70	35	20	0	56	34	38	50	31	94	44	0	0	3	0	0	0	0	977	
Total	3	2	9	200	778	1794	2512	2507	3393	4198	4597	3924	4624	4692	5107	5938	6978	6756	6427	6120	5830	4549	3692	3080	3652	3479	3438	3393	3517	3330	3397	111916	
Homo/bisexual	1	0	1	2	3	23	19	17	22	17	47	58	33	43	62	44	51	151	222	209	263	184	113	162	301	358	654	755	984	1203	1553	7555	
IDU	1	1	1	148	470	1153	1892	1970	2777	3187	3800	3014	3592	3374	3845	4724	5176	4796	4478	4038	3127	2601	2113	1699	1737	1348	1014	728	680	561	377	68392	
Heterosexual	1	1	1	30	38	103	152	174	205	310	344	400	653	824	902	834	1218	1307	1271	1356	1599	1315	989	821	1472	1573	1538	1743	1768	1398	1311	25651	
Blood Recipient	0	0	6	1	0	2	0	4	3	0	0	0	0	0	2	1	5	1	0	3	1	0	1	1	0	6	1	0	1	0	2	41	
Organ Recipient	0	0	0	0	0	2	0	0	0	0	1	0	0	0	0	0	0	0	0	0	0	0	0	0	0	0	0	0	0	0	2	5	
Needle Pkck Injury	0	0	0	0	0	0	0	0	0	0	0	0	0	0	0	0	0	0	0	0	0	0	0	0	0	0	0	0	0	0	0	2	
Mother-to-Child	0	0	0	0	0	3	4	2	8	4	20	19	34	44	82	57	60	62	67	67	75	81	70	50	51	39	70	47	52	36	19	14	1070
Unknown	0	0	0	19	267	508	445	340	378	680	385	433	312	407	244	278	468	439	389	439	379	759	379	426	346	103	124	184	115	46	149	138	9200
Total	3	2	9	200	778	1794	2512	2507	3393	4198	4597	3924	4624	4692	5107	5938	6978	6756	6427	6120	5830	4549	3692	3080	3652	3479	3438	3393	3517	3330	3397	111916	

Source: HIV/STI Sector, Division of Disease Control, Ministry of Health Malaysia